

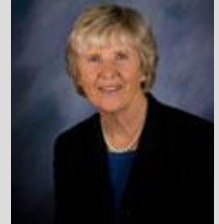
Regional Council of Mayors

The nationally recognized Regional Council of Mayors was formed in 2005 and is supported by the Urban Land Institute Minnesota. It includes Minneapolis, Saint Paul and 47 municipalities in the developed and developing suburbs. This collaborative partnership provides a nonpartisan platform focused on building action strategies to raise the region's overall economic competitiveness, innovation and quality of life.

RCM Co-chairs



Mayor James Hovland
City of Edina



Mayor Sandy Martin
City of Shoreview

Convene: Bring Mayors and cross sector leadership together around issues of regional significance.

Educate: Equip Mayors to lead and support learning across sectors.

Engage: Support civic outreach strategies.

Effect Change: Seek solutions that support a 'better way' for collective regional action.

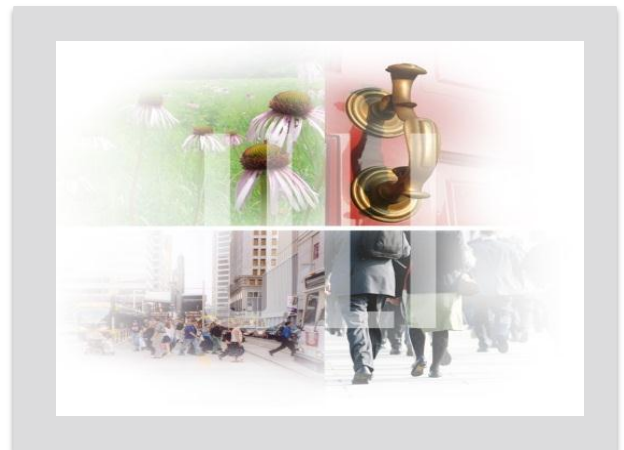
Four priority initiatives:

Housing: partnering to implement tools and strategies that support a full range of housing choices in connected, livable communities.

Transportation: building on national and regional best practices to connect transportation and land use systems.

Environment: promoting action strategies that reduce greenhouse gas emissions, protect natural resources, and support healthy living.

Job Growth: fostering regional collective action to strengthen economic competitiveness and job growth.



"We can learn a great deal from one another and have an impact beyond the boundaries of our respective communities."

-Mayor Sandy Martin, City of Shoreview

ULI Minnesota actively engages public and private sector leaders to foster collaboration, share knowledge and join in meaningful strategic action to position our region for economic growth and prosperity.

RCM Co-chairs:

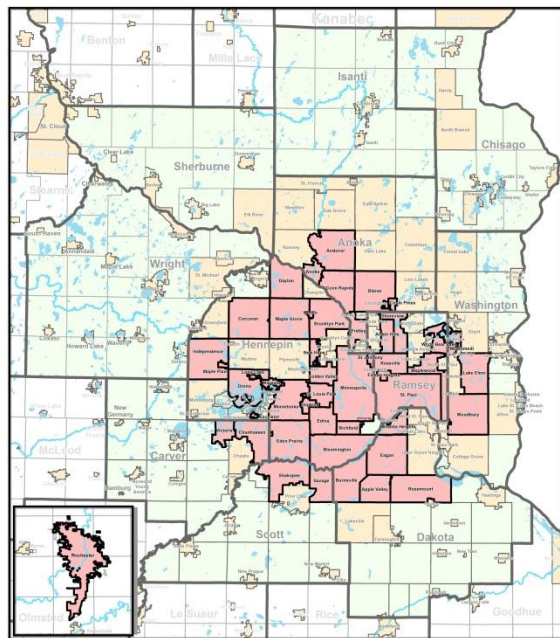
Mayor James Hovland, Edina
 Mayor Sandy Martin, Shoreview

RCM Committee Co-chairs:

Mayor Debbie Goettel, Richfield, Environment
 Mayor Mike Maguire, Eagan, Housing
 Mayor Terry Schneider, Minnetonka, CTLUS
 Mayor Elizabeth Kautz, Burnsville, Jobs

RCM Members:

Mayor Doug Anderson, Dayton
 Mayor Dave Bartholomay, Circle Pines
 Mayor Ardell Brede, Rochester
 Mayor Chris Coleman, Saint Paul
 Mayor William Droste, Rosemount
 Mayor Jo Emerson, White Bear Lake
 Mayor Jerry Faust, St. Anthony
 Mayor Tom Furlong, Chanhassen
 Mayor Mike Gamache, Andover
 Mayor Mary Giuliani Stephens, Woodbury
 Mayor David Grant, Arden Hills
 Mayor Ken Guenther, Corcoran
 Mayor Mary Hamann-Roland, Apple Valley
 Mayor Shep Harris, Golden Valley
 Mayor Mary Hershberger Thun, Victoria
 Mayor Kathi Hemken, New Hope
 Mayor Tim Howe, Coon Rapids
 Mayor Tim Hultmann, City of Long Lake
 Mayor Jeff Jacobs, St. Louis Park
 Mayor Marvin Johnson, Independence
 Mayor Dean Johnston, Lake Elmo
 Mayor Sandra Krebsbach, Mendota Heights
 Mayor Peter Lindstrom, Falcon Heights
 Mayor Alan Lindquist, Osseo
 Mayor Scott Lund, Fridley
 Mayor Jeffrey Lunde, Brooklyn Park



Participating Cities
 Regional Council of Mayors

■ Participating Cities Township Boundary
■ Other Cities ■ Lakes
■ RCM Counties ■ Rivers

5 0 5 10 Miles
 March 21, 2012
 Map Courtesy of Statco
K:\data\work\gis\mapserver\20090508\060717-0-0501-subarea\mapserver\info\rcm_mn.html

Mayor Judson Marshall, Mahtomedi
 Mayor Gene Maxwell, Hopkins
 Mayor Lili McMillan, Orono
 Mayor Phil Rice, Anoka
 Mayor Dan Roe, Roseville
 Mayor Will Rossbach, Maplewood
 Mayor Nick Ruehl, Excelsior
 Mayor Tom Ryan, Blaine
 Mayor R. T. Rybak, Minneapolis
 Mayor Mark Steffenson, Maple Grove
 Mayor John Sweeney, Maple Plain
 Mayor Brad Tabke, Shakopee
 Mayor George Tourville, Inver Grove Heights
 Mayor Nancy Tyra-Lukens, Eden Prairie
 Mayor Ken Willcox, Wayzata
 Mayor Janet Williams, Savage
 Mayor Gene Winstead, Bloomington

Contact ULI Minnesota:

81 S 9th Street #310
 Minneapolis, MN 55402
 612.338.1332
<http://minnesota.uli.org>

RCM /ULI Minnesota Contacts:

Caren Dewar
 Executive Director
Caren.dewar@uli.org
 612.759.1016

Katherine Anderson
 Associate
Katherine.anderson@uli.org
 612.338.1332