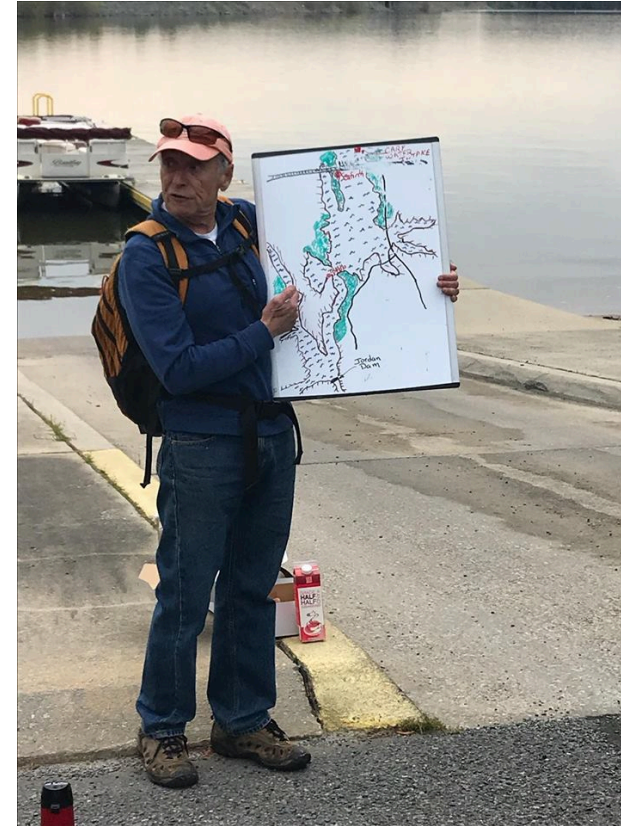
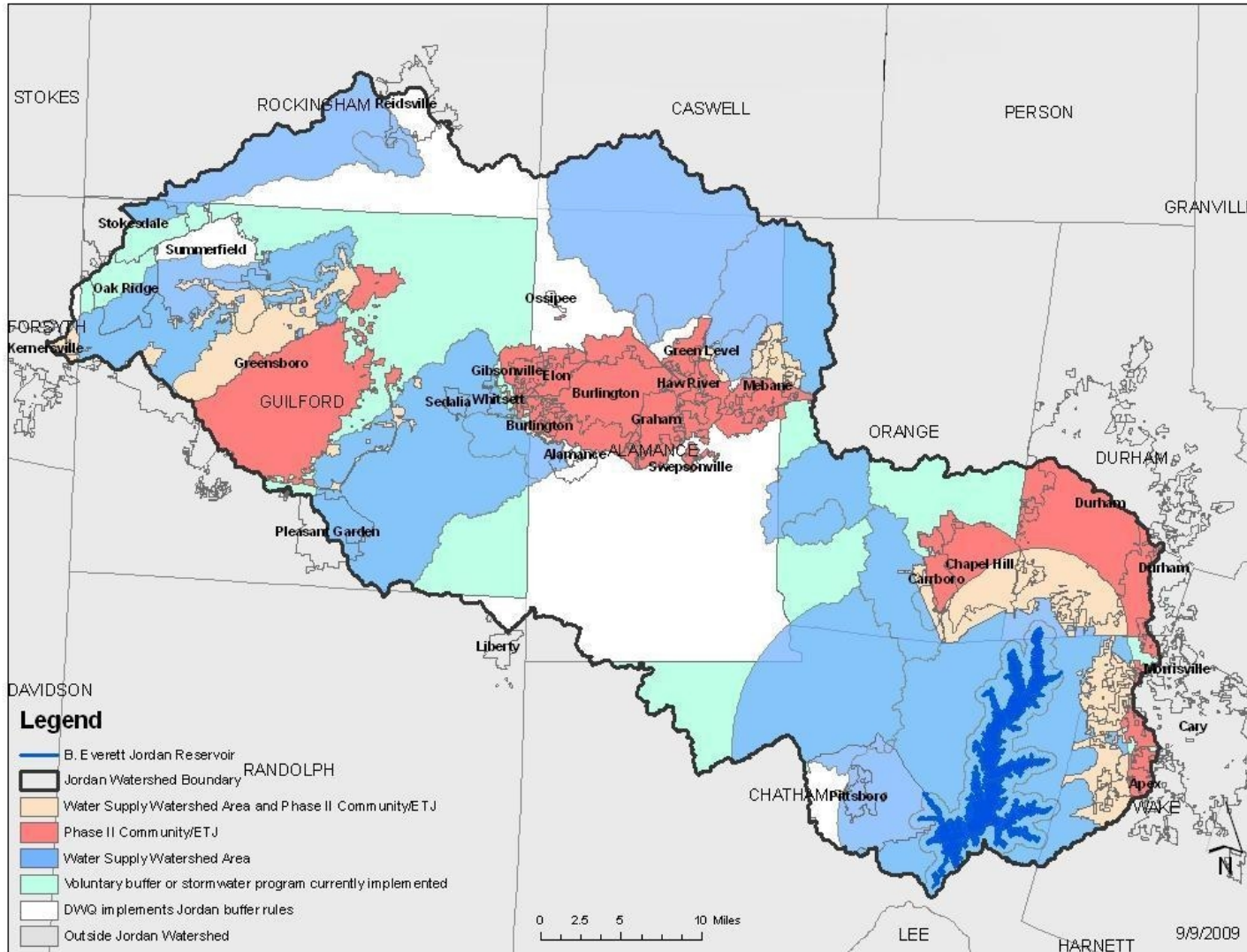


Jordan Lake One Water Association (JLOWA)



Mayor Pam Hemminger
Chapel Hill, NC

Jordan Lake Watershed Triangle Region of North Carolina



The Watershed:

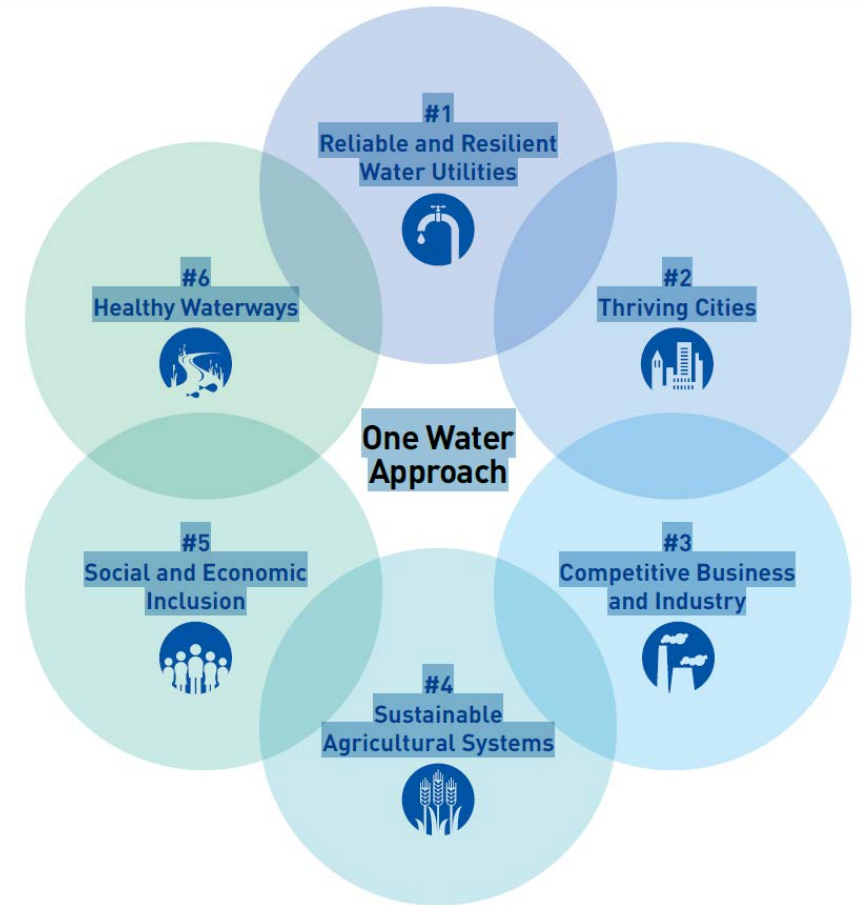
- ~1,700 square miles
- 10 counties
- 27 municipalities
- 11 water supply reservoirs
- ~685,000 water customers

Goals:

- Equal prioritization of water quantity and water quality
- Finding ways to conserve, use, reuse and share water resources more effectively across watershed
- Identify and pool resource needs

The “One Water” Approach

- A transformative approach to how we VIEW, VALUE and MANAGE water.
- Managing all water in an INTEGRATED, INCLUSIVE and SUSTAINABLE manner.
- Can take many DIFFERENT FORMS to address unique conditions and specific needs
- Has a set of UNIFYING CHARACTERISTICS including:
 - A Systems Mindset
 - Watershed Scale Thinking and Action
 - Partnership and Inclusion



US Water Alliance

Why JLOWA?

- Triangle Region is among the fastest growing regions in the country
- State laws and regulations constrain innovative, integrated approaches to water policy
- Up and downstream water supply issues along our rivers affect 10 counties, 27 municipalities



Diversity of JLOWA Stakeholders

